

Heartland Builders of NWI

Building Dreams

910 Kildare Drive, Crown Point, IN. 46307
Ellendale Subdivision

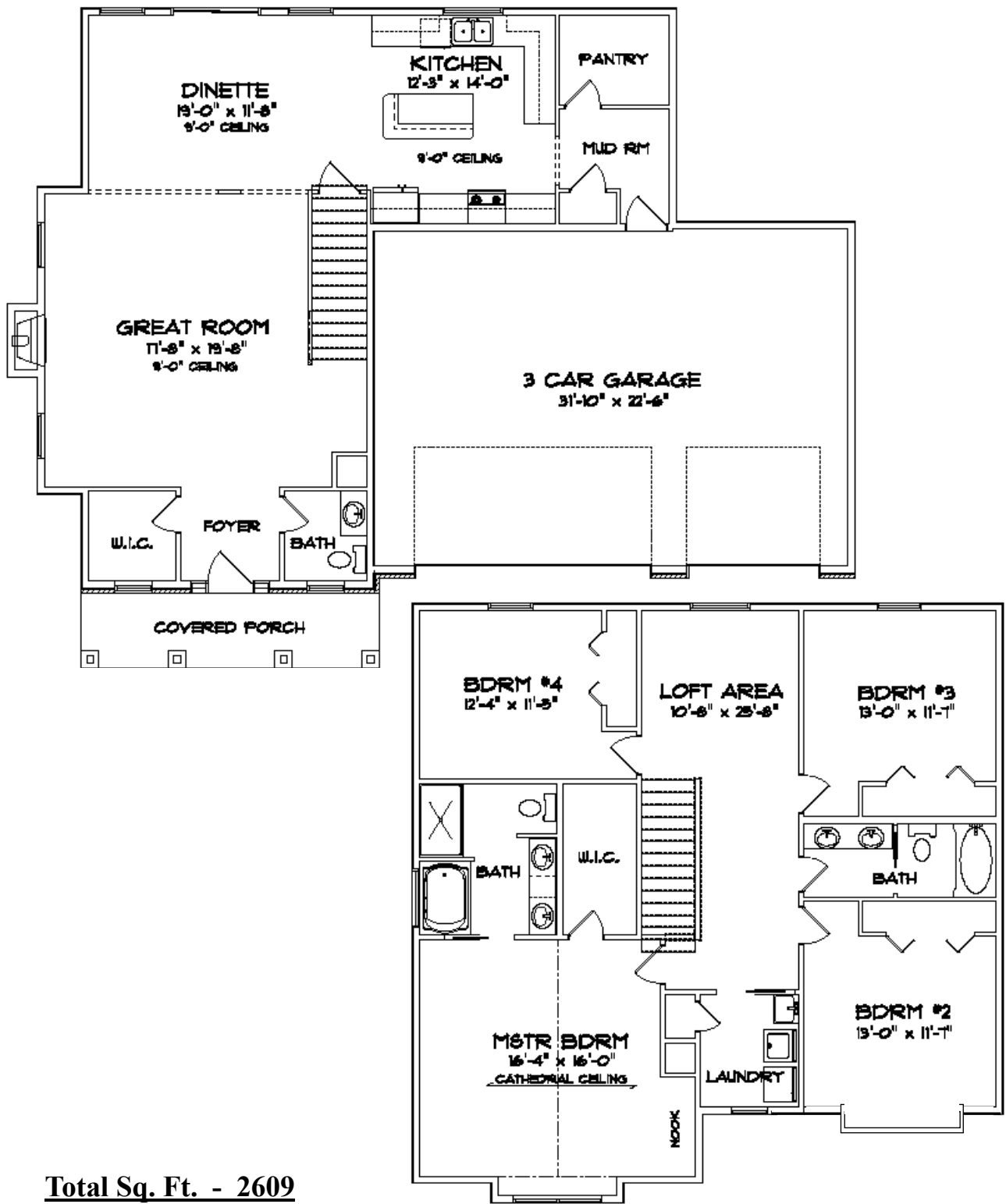


The Isabell

\$429,900

- 2609 square feet
- 9' ceiling on first floor
- 4 bedroom
- 2.5 bath
- Great kitchen with huge walk-in pantry
- Hardwood flooring throughout main level
- Beautiful Granite counters in kitchen
- High end cabinets with soft close, dovetail drawers
- Fireplace with custom mantel
- Large deep back yard
- Painted trim package, all white trim with black door
- Mudroom off of garage with lockers
- Conveniently located laundry room upstairs
- 14 x 14 deck
- Second floor loft area
- Cathedral ceiling in master suite w/ large walk-in closet
- Ceramic Flooring in upper baths
- Upgraded front door
- 2 x 6 exterior walls
- 93% efficient furnace
- Blown in blanket insulation system
- Full basement (daylight basement)
- Basement bathroom underground plumbing roughed in
- 3 1/2 car garage - drywalled & insulated
- Landscape not included
- This is the family home you have been Looking For!

Call Rick (219) 227-9533 or visit at www.heartlandbuild.com



Total Sq. Ft. - 2609

2 Story

For sales information please contact Rick 219-227-9533
www.heartlandbuild.com rick@heartlandbuild.com