

Heartland Builders of NWI

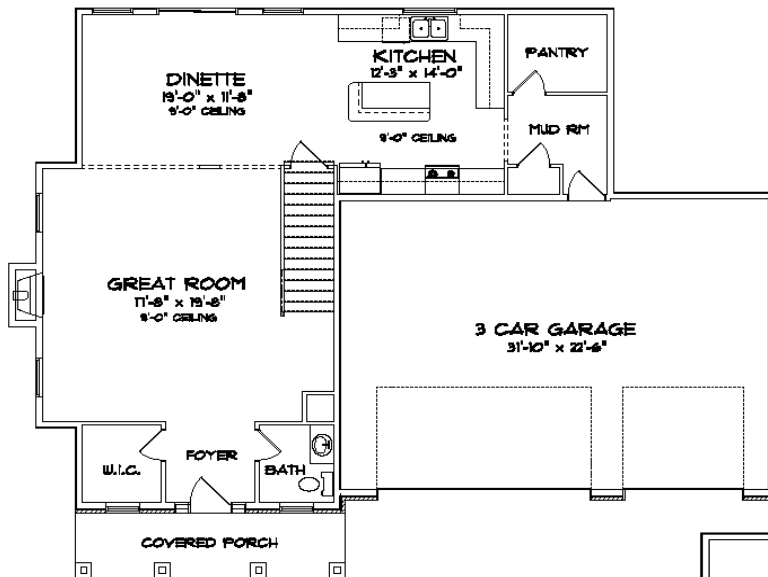
Building Dreams



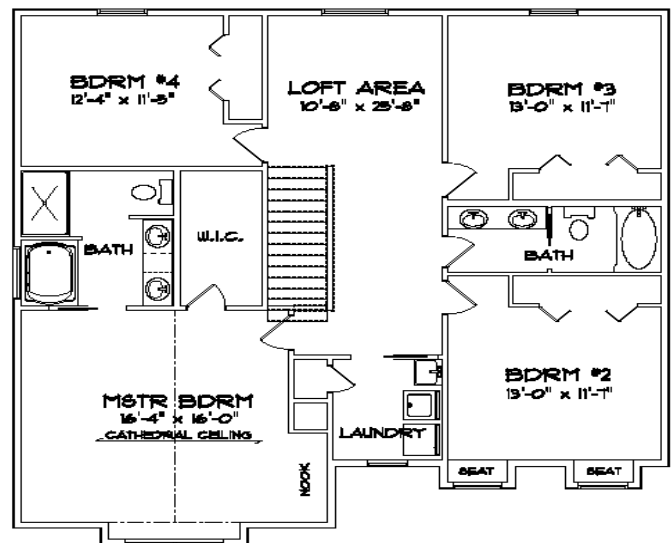
The Isabell

Total sq. ft. 2609 + Full Basement

- ◇ 2 story
- ◇ 9" ceiling on main level
- ◇ 4 bedroom
- ◇ 2.5 bathrooms
- ◇ Large walk-in pantry
- ◇ Mudroom off of garage
- ◇ Fireplace
- ◇ Conveniently located laundry room on upper level
- ◇ Loft area upstairs
- ◇ Cathedral ceiling in master suite w/ large walk-in closet
- ◇ 3 car garage, upgrade option shown



Main level 1141 sq. ft.



Upper level 1468 sq. ft.

For sales information please contact Heartland Builders at 219-227-9533
Or Rick at 219-746-9352

www.heartlandbuild.com

rick@heartlandbuild.com