

# Heartland Builders of NWI

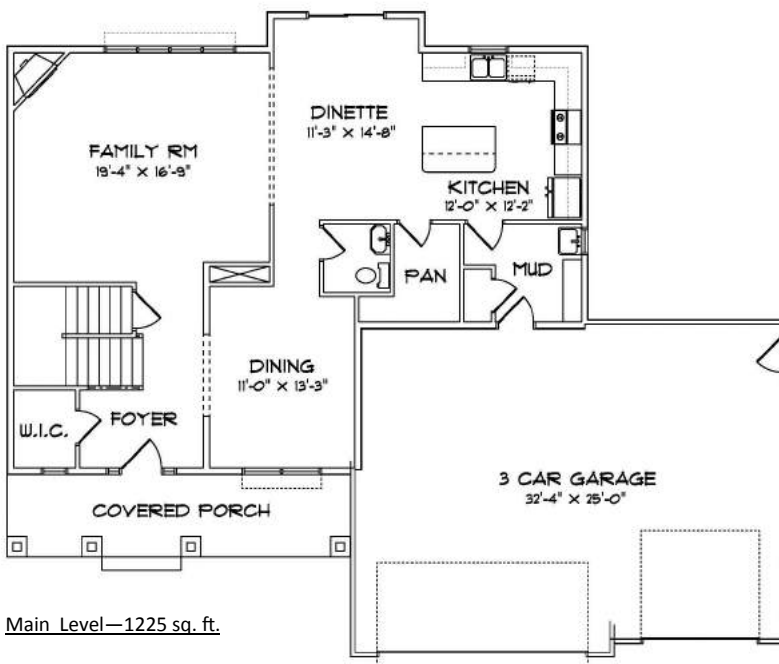
*Building Dreams*



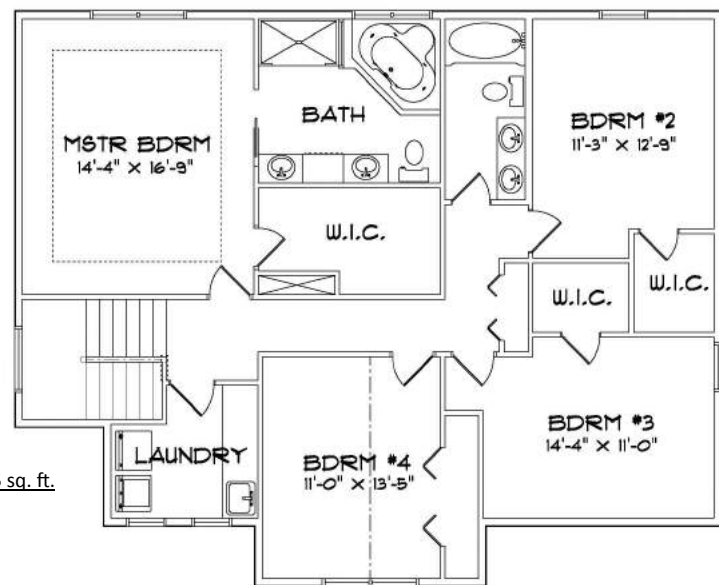
## *The Peyton*

Total sq. ft. 2561 + Full Basement

- ◇ 2 story
- ◇ 4 bedroom
- ◇ 2.5 bathrooms
- ◇ Large walk in pantry
- ◇ Convenient spacious 2nd floor laundry room
- ◇ Huge master closet
- ◇ Shown with 3.5 car garage option



Main Level—1225 sq. ft.



Second Level—1335 sq. ft.

For sales information please contact Heartland Builders at 219-227-9533

[www.heartlandbuild.com](http://www.heartlandbuild.com)

[rick@heartlandbuild.com](mailto:rick@heartlandbuild.com)